



→ Clinical Guide for Metabolic Detoxification

Science-based metabolic detoxification
formulas from the industry leader.

Reliable protocols for reliable outcomes.
The health of your patients depends on it.*

Metabolic Detoxification: Supporting the 3 Phases*

The human body is typically well-equipped to rid itself of potentially harmful chemicals and pollutants (xenobiotics), particularly those that are water-soluble and can pass easily through the stool, sweat, or urine. However, in certain situations the sheer volume to which humans are exposed can overburden these natural processes (metabolic detoxification), allowing some of these substances to accumulate in tissue, e.g. fat.

Metabolic detoxification is a natural bodily process that consists of 3 major detoxification pathways: Phase I (functionalization), Phase II (conjugation), and Phase III (antiporter activity). In this process, fat-soluble compounds must undergo transformation and become water-soluble before they can be excreted.

UltraClear Formulas: Designed to Support Metabolic Detoxification*

Detoxification Alert

Potentially harmful compounds enter the body. Water-soluble molecules are more readily excreted, while fat-soluble compounds must be converted to be eliminated.

Phase I—Functionalization

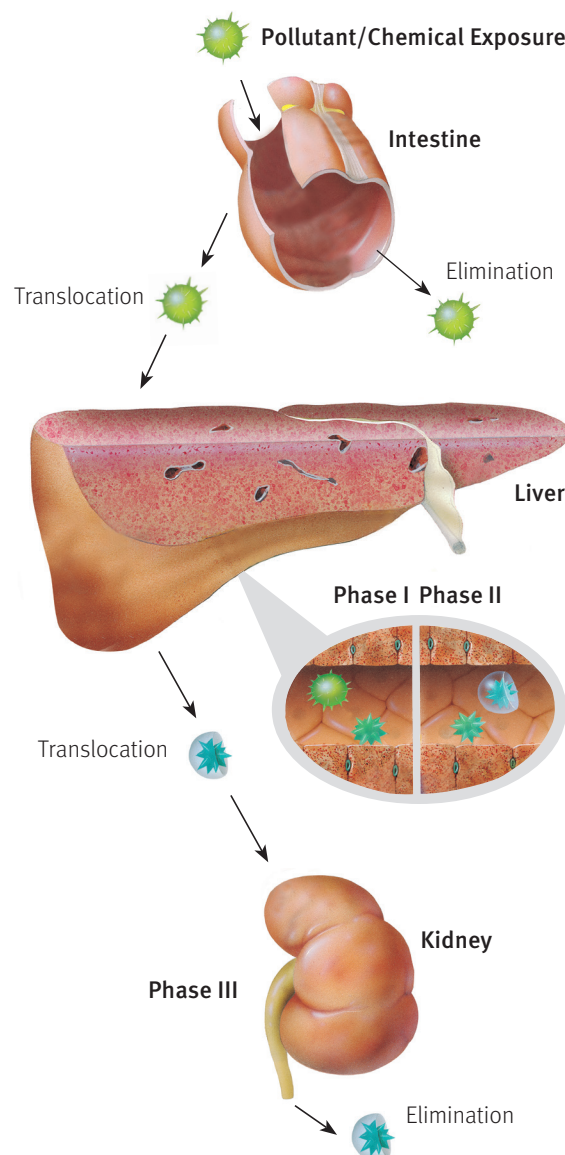
Cytochrome P450 enzymes in the liver break down xenobiotics, producing molecules that are highly reactive (free radicals), which can increase the risk of cellular damage unless further processed (detoxified).

Phase II—Conjugation

Large molecules join together with modified xenobiotics to produce water-soluble substances, which are released to the kidney or back to the gastrointestinal tract.

Phase III—Antiporter Activity

The water-soluble substance is excreted via the urine or stool.



All UltraClear formulas aid the intestine

Feature a low allergy potential base and are designed to help nutritionally support the detoxification of potentially harmful compounds by the liver and reduce exposure to food allergens.*

All UltraClear formulas support Phase I & II

Provide nutrients to help enhance activities of several liver detoxification enzymes and provide antioxidants to help support the clearance of reactive intermediary compounds.*

UltraClear RENEW™ & UltraClear® Plus pH benefit Phase III

Designed to promote alkalinity and nutritionally support Phase III detoxification (excretion).*

LIVER DETOXIFICATION SUPPORT*



UltraClear® Improved Formula

UltraClear is formulated to provide specialized nutritional support for metabolic detoxification. It features a low-allergenic-potential rice protein base, which may be beneficial during times of increased food allergen exposure, and is enhanced with specific nutrients and high in antioxidant vitamins

A, C, and E to provide well-rounded nutritional support for liver detoxification.*

Patient benefits:

- Provides nutrients that support hepatic detoxification processes (Phases I & II).*
- Features a low-allergy-potential rice protein concentrate as part of a “clean” macronutrient base to complement a modified elimination diet.*
- Features 5 amino acids, including L-lysine and L-threonine to increase the biological value of the protein.
- Features enhanced nutrient support with methylated vitamin B₁₂ and calcium L-5-methyltetrahydrofolate, a bioavailable folate.*
- Features antioxidant nutrients that may help protect against oxygen free radicals generated during the hepatic detoxification process.*
- May be used with 10- or 28-day metabolic detoxification programs (e.g., Clear Change), as well as on a long-term basis.*
- Available in Natural Vanilla flavor [32.6 oz (2 lb 0.6 oz) (924 g) Powder].
- This formula is non-GMO and gluten free.

Natural Vanilla Flavor

S U P P L E M E N T F A C T S

Serving Size About 2 Scoops (44 g)

Servings Per Container 21 (by weight)

	Amount Per Serving	% Daily Value
Calories	170	
Calories from Fat	35	
Total Fat	4 g	6%*
Saturated Fat†	1.5 g	8%*
Total Carbohydrate	19 g	6%*
Dietary Fiber	2 g	8%*
Sugars	6 g	
Protein	15 g	30%*
Vitamin A (4000 IU as beta-carotene and 1000 IU as retinyl palmitate)	5000 IU	100%
Vitamin C (as ascorbic acid)	110 mg	183%
Vitamin D (as cholecalciferol)	35 IU	9%
Vitamin E (as d-alpha tocopheryl acetate)	80 IU	267%
Thiamin (as thiamin HCl)	2 mg	133%
Riboflavin	2 mg	118%
Niacin (as niacinamide)	7 mg	35%
Vitamin B ₆ (as pyridoxine HCl)	3.4 mg	170%
Folate (as calcium L-5-methyltetrahydrofolate)	80 mcg	20%
Vitamin B ₁₂ (as methylcobalamin)	3.6 mcg	60%
Biotin	135 mcg	45%
Pantothenic Acid (as D-calcium pantothenate)	3.5 mg	35%
Calcium (as dicalcium phosphate and calcium citrate)	130 mg	13%
Iron (as ferrous fumarate)	3.6 mg	20%
Phosphorus (as dipotassium phosphate and dicalcium phosphate)	200 mg	20%
Iodine (as potassium iodide)	53 mcg	35%
Magnesium (as magnesium citrate)	140 mg	35%
Zinc (as zinc gluconate)	10 mg	67%
Copper (as copper gluconate)	1 mg	50%
Manganese	1.3 mg	65%
Chromium (as chromium picolinate)	50 mcg	42%
Sodium	60 mg	3%
Potassium (as dipotassium phosphate and potassium iodide)	420 mg	12%
L-Glycine	100 mg	**
DL-Methionine	50 mg	**
L-Lysine (as L-lysine HCl)	35 mg	**
L-Threonine	35 mg	**
L-Cysteine (as L-cysteine HCl)	30 mg	**

*Percent Daily Values are based on a 2,000-calorie diet.

**Daily Value not established.

Other Ingredients: Rice protein concentrate, rice syrup solids, olive oil, medium chain triglycerides, natural flavors, silica, and rice maltodextrin.

Directions: Blend, shake, or briskly stir 2 level scoops (44 grams) of UltraClear into 8 fluid ounces of chilled water or juice twice daily, or as directed by your healthcare practitioner. For highly sensitive individuals, consider reducing consumption to ½ to 1 scoop with 4 to 5 ounces of chilled water or juice twice daily during the first 3 to 4 days before starting a full daily dose.

Warning: Excess vitamin A intake may be toxic and may increase the risk of birth defects. Pregnant women and women who may become pregnant should not exceed 10,000 IU of preformed vitamin A (retinyl palmitate) per day.

* These statements have not been evaluated by the Food and Drug Administration. This product is not intended to diagnose, treat, cure, or prevent any disease.

ENHANCED LIVER DETOXIFICATION SUPPORT*



UltraClear Plus® Improved Formula

UltraClear Plus is formulated to provide enhanced, specialized nutritional support for metabolic detoxification capacity, with a focus on Phase II support for balanced detoxification. It also provides enhanced support for a healthy intestinal lining, which is essential for healthy digestion and overall health. It features a low-allergenic-potential rice protein base, which may be beneficial during times of increased food allergen exposure, and is enhanced with specific nutrients and high in antioxidants vitamins A, C, and E to provide well-rounded nutritional support for liver detoxification.*

Patient benefits:

- Features enhanced support for Phase II hepatic detoxification processes to promote balanced detoxification capacity.*
- Features enhanced nutrient support with methylated vitamin B₁₂ and calcium L-5-methyltetrahydrofolate, a bioavailable folate.*
- Features 7 added amino acids, including glycine and L-cysteine to help support Phase II liver detoxification.*
- Formulated with nutrients such as pantothenic acid and the amino acid glutamine to support gastrointestinal mucosa integrity.*
- Features magnesium sulfate to support Phase II sulfation.*
- Features green tea catechins and antioxidant nutrients (vitamins A, C, and E) to protect against potentially harmful compounds generated during the natural liver detoxification process.*
- May be used in 10- or 28-day metabolic detoxification programs, as well as on a long-term basis.*
- Available in 3 natural flavors: Natural Vanilla [32.6 oz (2 lb 0.6 oz) (924 g) Powder], Natural Berry [33.3 oz (2 lb 1.3 oz) (945 g) Powder], and Natural Pineapple Banana [32.6 oz (2 lb 0.6 oz) (924 g) Powder].
- This formula is non-GMO and gluten free.

Natural Berry Flavor

S U P P L E M E N T F A C T S

Serving size About 2 Scoops (45 g)
Servings Per Container 21 (by weight)

	Amount Per Serving	% Daily Value
Calories	160	
Calories from Fat	30	
Total Fat	3 g	5%*
Saturated Fat [†]	1 g	5%*
Total Carbohydrate	19 g	6%*
Dietary Fiber	2 g	8%*
Sugars	5 g	
Protein	15 g	30%*
Vitamin A (4000 IU as beta-carotene and 1000 IU as retinyl palmitate)	5000 IU	100%
Vitamin C (as ascorbic acid)	300 mg	500%
Vitamin D (as cholecalciferol)	35 IU	9%
Vitamin E (as d-alpha tocopheryl acetate)	42 IU	140%
Thiamin (as thiamin HCl)	2 mg	133%
Riboflavin	2 mg	118%
Niacin (as niacinamide)	7 mg	35%
Vitamin B ₆ (as pyridoxine HCl)	3.4 mg	170%
Folate (as calcium L-5-methyltetrahydrofolate)	80 mcg	20%
Vitamin B ₁₂ (as methylcobalamin)	3.6 mcg	60%
Biotin	135 mcg	45%
Pantothenic Acid (as D-calcium panthothenate)	36 mg	360%
Calcium (as calcium citrate and dicalcium phosphate)	240 mg	24%
Iron	0.5 mg	3%
Phosphorus (as dipotassium phosphate and dicalcium phosphate)	300 mg	30%
Iodine (as potassium iodide)	53 mcg	35%
Magnesium (as magnesium citrate and magnesium sulfate)	200 mg	50%
Zinc (as zinc gluconate)	10 mg	67%
Copper (as copper gluconate)	1 mg	50%
Manganese	1 mg	50%
Chromium (as chromium picolinate)	50 mcg	42%
Sodium	80 mg	3%
Potassium (as dipotassium phosphate and potassium iodide)	420 mg	12%
L-Glycine	1600 mg	**
L-Lysine (as L-lysine HCl)	505 mg	**
L-Threonine	285 mg	**
L-Alanine	235 mg	**
DL-Methionine	170 mg	**
L-Glutamine	100 mg	**
L-Cysteine (as L-cysteine HCl)	85 mg	**
Sulfate (as magnesium sulfate)	20 mg	**
Decaffeinated [†] Green Tea (<i>Camellia sinensis</i>) Leaf Extract [standardized to 60% (15 mg) catechins and 40% (10 mg) epigallocatechingallate (EGCG)]	25 mg	**

*Percent Daily Values are based on a 2,000-calorie diet.

**Daily Value not established.

Other Ingredients: Rice protein concentrate, rice syrup solids, natural flavors, olive oil, medium chain triglycerides, beet powder (color), raspberry powder, silica, and rice maltodextrin.

Directions: Blend, shake, or briskly stir about 2 level scoops (45 grams) of UltraClear Plus into 8 fluid ounces of chilled water or juice twice daily or as directed by your healthcare practitioner. For highly sensitive individuals, consider reducing consumption to ½ to 1 scoop with 4 to 5 ounces of chilled water or juice twice daily during the first 3 to 4 days before starting a full daily dose.

Warning: Excess vitamin A intake may be toxic and may increase the risk of birth defects. Pregnant women and women who may become pregnant should not exceed 10,000 IU of preformed vitamin A (retinyl palmitate) per day.

[†]Contains no more than 4% caffeine.

ENHANCED SUPPORT FOR LIVER DETOXIFICATION & ALKALINIZATION*



UltraClear® Plus pH *Improved Formula*

UltraClear Plus pH is formulated to provide enhanced, specialized nutritional support for balanced hepatic detoxification capacity, with a focus on alkalization support that can influence Phase II detoxification and elimination (Phase III). It features a low-allergenic-potential rice protein base, which may be beneficial during times of increased food allergen exposure, and is enhanced with specific nutrients and high in antioxidant vitamins A, C, and E to provide well-rounded nutritional support for liver detoxification.*

Patient benefits:

- Features enhanced support for Phase II hepatic detoxification with green tea catechins, magnesium sulfate, and 7 added amino acids.*
- Features enhanced nutrient support with methylated vitamin B₁₂ and calcium L-5-methyltetrahydrofolate, a bioavailable folate.*
- Provides enhanced support to protect against oxidative stress during the natural liver detoxification process.*
- Features sesame and 750 mg of potassium to promote alkalization and support Phase III detoxification (elimination).*
- May be used in 10- or 28-day metabolic detoxification programs, as well as on a long-term basis.*
- Available in 2 natural flavors: Natural Vanilla [34 oz (2 lb 2 oz) (966 g) Powder] and Natural Pineapple Banana [34 oz (2 lb 2 oz) (966 g) Powder].
- This formula is non-GMO and gluten free.

Directions: Blend, shake, or briskly stir about 2 level scoops (46 grams) of UltraClear Plus pH into 8 fluid ounces of chilled water or juice twice daily, or as directed by your healthcare practitioner. For highly sensitive individuals, consider reducing consumption to ½ to 1 scoop with 4 to 5 ounces of chilled water or juice twice daily during the first 3 to 4 days before starting a full daily dose.

Warning: Excess vitamin A intake may be toxic and may increase the risk of birth defects. Pregnant women and women who may become pregnant should not exceed 10,000 IU of preformed vitamin A (retinyl palmitate) per day.

Natural Vanilla Flavor

S U P P L E M E N T F A C T S

Serving size About 2 Scoops (46 g)

Servings Per Container 21 (by weight))

	Amount Per Serving	% Daily Value
Calories	180	
Calories from Fat	45	
Total Fat	5 g	8%*
Saturated Fat [†]	1 g	5%*
Total Carbohydrate	19 g	6%*
Dietary Fiber	2 g	8%*
Sugars	6 g	
Protein	15 g	30%*
Vitamin A (4000 IU as beta-carotene and 1000 IU as retinyl palmitate)	5000 IU	100%
Vitamin C (as ascorbic acid)	300 mg	500%
Vitamin D (as cholecalciferol)	35 IU	9%
Vitamin E (as d-alpha tocopheryl acetate)	42 IU	140%
Thiamin (as thiamin HCl)	2 mg	133%
Riboflavin	2 mg	118%
Niacin (as niacinamide)	7 mg	35%
Vitamin B ₆ (as pyridoxine HCl)	3.4 mg	170%
Folate (as calcium L-5-methyltetrahydrofolate)	80 mcg	20%
Vitamin B ₁₂ (as methylcobalamin)	3.6 mcg	60%
Biotin	135 mcg	45%
Pantothenic Acid (as D-calcium panthothenate)	36 mg	360%
Calcium (as calcium citrate and dicalcium phosphate)	210 mg	21%
Iron	0.5 mg	3%
Phosphorus (as dipotassium phosphate and dicalcium phosphate)	300 mg	30%
Iodine (as potassium iodide)	53 mcg	35%
Magnesium (as magnesium citrate and magnesium sulfate)	230 mg	58%
Zinc (as zinc gluconate)	10 mg	67%
Copper (as copper gluconate)	1 mg	50%
Manganese	1 mg	50%
Chromium (as chromium picolinate)	50 mcg	42%
Sodium	100 mg	4%
Potassium (as potassium citrate, dipotassium phosphate and potassium iodide)	750 mg	21%
L-Glycine	1600 mg	**
L-Lysine (as L-lysine HCl)	505 mg	**
L-Threonine	285 mg	**
L-Alanine	235 mg	**
DL-Methionine	170 mg	**
L-Glutamine	100 mg	**
L-Cysteine (as L-cysteine HCl)	85 mg	**
Sulfate (as magnesium sulfate)	20 mg	**
Decaffeinated [†] Green Tea (<i>Camellia sinensis</i>) Leaf Extract [standardized to 60% (15 mg) catechins and 40% (10 mg) epigallocatechingallate (EGCG)]	25 mg	**

*Percent Daily Values are based on a 2,000-calorie diet.

**Daily Value not established.

Other Ingredients: Rice protein concentrate, rice syrup solids, sesame seed oil, natural flavors, medium chain triglycerides, silica, and rice maltodextrin.

Caution: Do not use if you are pregnant or nursing, you have hyperkalemia or abnormal kidney function, or you are taking ACE inhibitors, angiotensin receptor blockers (ARBs), or potassium sparing diuretics. If taking other medication, consult your healthcare practitioner before use.

[†]Contains no more than 4% caffeine.

* These statements have not been evaluated by the Food and Drug Administration. This product is not intended to diagnose, treat, cure, or prevent any disease.

ADVANCED DETOXIFICATION &
HEAVY METAL METABOLISM SUPPORT*



UltraClear RENEW™ Improved Formula

UltraClear RENEW is formulated to provide advanced, specialized nutritional support for metabolic detoxification—including support for alkalinization, balanced liver detoxification capacity, and heavy metal metabolism. It features a low-allergenic-potential rice protein base, which may be beneficial during times of increased food allergen exposure, and is enhanced with specific nutrients, botanicals, and high in antioxidants (vitamins A, C, and E) to provide well-rounded nutritional support for liver detoxification.*

Patient benefits:

- Provides enhanced support for Phase II hepatic detoxification processes to promote balanced detoxification capacity.*
- Features magnesium sulfate and 8 added amino acids (including glycine and L-cysteine) to help support Phase II liver detoxification.*
- Features enhanced nutrient support with methylated vitamin B₁₂ and calcium L-5-methyltetrahydrofolate, a bioavailable folate.*
- Features enhanced support for alkalinization and Phase III detoxification (elimination).*
- Provides enhanced phytonutrient protection with spent hops, prune extract, green tea catechins, and antioxidant vitamins A, C, and E.*
- Provides enhanced support for heavy metal metabolism.*
- Features watercress extract (a source of glucosinolates), green tea catechins, and ellagic acid to support Phase II glutathione S-transferase induction.*
- May be used in 10- or 28-day metabolic detoxification programs, as well as on a long-term basis.*
- Available in 2 natural flavors: Natural Vanilla [32.6 oz (2 lb 0.6 oz) (924 g) Powder] and Natural Peach [27.4 oz (1 lb 11.4 oz) (777 g) Powder].
- This formula is non-GMO and gluten free.

Directions: Shake the canister before scooping. Blend, shake, or briskly stir about 2 level scoops (37 grams) of UltraClear RENEW into 8 ounces of chilled water or juice twice daily or as directed by your healthcare practitioner. For highly sensitive individuals, consider reducing consumption to ½ to 1 scoop with 4 to 5 ounces of chilled water or juice twice daily during the first 3 to 4 days before starting a full daily dose.

Warning: Excess vitamin A intake may be toxic and may increase the risk of birth defects. Pregnant women and women who may become pregnant should not exceed 10,000 IU of preformed vitamin A (retinyl palmitate) per day.

Natural Vanilla Flavor

S U P P L E M E N T F A C T S

Serving size About 2 Scoops (37 g)
Servings Per Container 21 (by weight)

	Amount Per Serving	% Daily Value
Calories	150	
Calories from Fat	30	
Total Fat	3 g	5%*
Saturated Fat	1 g	5%*
Total Carbohydrate	20 g	7%*
Dietary Fiber	3 g	12%*
Sugars	9 g	
Protein	12 g	24%*
Vitamin A (4000 IU as beta-carotene and 1000 IU as retinyl palmitate)	5000 IU	100%
Vitamin C (as ascorbic acid)	300 mg	500%
Vitamin D (as cholecalciferol)	35 IU	9%
Vitamin E (as d-alpha tocopheryl acetate)	42 IU	140%
Thiamin (as thiamin HCl)	2 mg	133%
Riboflavin	2 mg	118%
Niacin (as niacinamide)	7 mg	35%
Vitamin B ₆ (as pyridoxine HCl)	3.4 mg	170%
Folate (as calcium L-5-methyltetrahydrofolate)	80 mcg	20%
Vitamin B ₁₂ (as methylcobalamin)	3.6 mcg	60%
Biotin	135 mcg	45%
Pantothenic Acid (as D-calcium panthothenate)	36 mg	360%
Calcium (as calcium citrate)	150 mg	15%
Iron	1 mg	6%
Phosphorus (as dipotassium phosphate)	230 mg	23%
Iodine (as potassium iodide)	53 mcg	35%
Magnesium (as magnesium citrate, magnesium chloride, and magnesium sulfate)	160 mg	40%
Zinc (as zinc gluconate)	10 mg	67%
Copper (as copper gluconate)	1 mg	50%
Manganese	1 mg	50%
Chromium (as chromium picolinate)	50 mcg	42%
Chloride (as magnesium chloride)	180 mg	5%
Sodium (as sodium chloride)	220 mg	9%
Potassium (as dipotassium phosphate, potassium citrate, and potassium iodide)	520 mg	15%
Proprietary Spent Hops (<i>Humulus lupulus</i>) Powder	1000 mg	**
L-Glycine	800 mg	**
L-Alanine	350 mg	**
L-Threonine	250 mg	**
DL-Methionine	140 mg	**
L-Lysine (as L-lysine HCl)	135 mg	**
Prune (<i>Prunus domestica</i>) Skin Extract	125 mg	**
L-Glutamine	125 mg	**
L-Cysteine (as L-cysteine HCl)	100 mg	**
L-Tyrosine	100 mg	**
Watercress (<i>Nasturtium officinale</i>) Aerial Parts Extract	67 mg	**
Ellagic Acid [from pomegranate (<i>Punica granatum</i>) Whole Fruit Extract]	50 mg	**
Decaffeinated* Green Tea (<i>Camellia sinensis</i>) Leaf Extract [standardized to 60% (15 mg) catechins and 40% (10 mg) epigallocatechingallate (EGCG)]	25 mg	**
Sulfate (as magnesium sulfate)	20 mg	**

*Percent Daily Values are based on a 2,000-calorie diet.

**Daily Value not established.

Other Ingredients: Rice protein concentrate, rice syrup solids, fructose, natural flavors, partially hydrolyzed guar gum, olive oil, medium chain triglycerides, silica, and rice maltodextrin.

Caution: Do not use if pregnant or nursing. Not recommended for individuals taking anticoagulant medications.

*Contains no more than 4% caffeine.

Which UltraClear Formula Is Right for Your Patients?

UltraClear formulas were introduced over 20 years ago and are a driving force behind the growing awareness of the benefits of metabolic detoxification. These premier, research-based formulas have a long history of successful clinical use and are strategically designed to offer different levels of support to meet individual needs for more successful outcomes. For example, UltraClear Plus pH features the same exceptional macro- and micronutrient profile as UltraClear Plus, but with added nutrients designed to promote an alkaline urinary pH status and enhance Phase III activity.*

The charts below are designed to help you make appropriate recommendations for your patients. For additional information on UltraClear formulas and clinical protocols for metabolic detoxification, contact your Metagenics representative or our technical support and clinical services team.

	Level 1	Level 2	Level 3	Level 4
Support*	UltraClear	UltraClear Plus	UltraClear Plus pH	UltraClear RENEW
Phase 1	✓	✓	✓	✓
Phase 2	✓	✓+	✓+	✓+
Oxidative Stress Defense	✓	✓+	✓+	✓+
Phase 3 (Alkalinization)			✓	✓
Heavy Metal Metabolism				✓
Urinary pH	≥6.6	≥6.6	<6.6	<6.6
Recommendations/ Ideal Use	Daily support	Decreased vitality	Decreased vitality; acidic urinary pH	More sensitive individuals; “go to” formula for 10- & 28-day programs

	Low-Allergy-Potential Rice Protein with Added Amino Acids*			Enhanced Support for Bifunctional Detoxification*		Enhanced Oxidative Stress Defense*		Phase III Support*	Phytonutrient Support for Heavy Metal Metabolism*	
	Added Glycine Methionine, Lysine, Threonine, Cysteine	Added Alanine, Glutamine	Added Tyrosine	Pantothenic Acid (36 mg)	Green Tea Catechins	Vitamin C (300 mg)	Green Tea Catechins	Alkalizing Nutrients	Watercress (<i>Nasturtium officinale</i>) & Prune (<i>Prunus domestica</i>) Extracts	Ellagic Acid (from pome- granate)
UltraClear	✓									
UltraClear Plus	✓	✓		✓	✓	✓	✓			
UltraClear Plus pH	✓	✓		✓	✓	✓	✓	✓		
UltraClear RENEW	✓	✓	✓	✓	✓	✓	✓	✓	✓	✓

* These statements have not been evaluated by the Food and Drug Administration. This product is not intended to diagnose, treat, cure, or prevent any disease.

LIVER SUPPORT*



AdvaClear®

AdvaClear provides daily support for balanced activity of the Phase I and Phase II detoxification pathways.*

Patient benefits:

- Promotes overall well-being by supporting balanced hepatic detoxification.*
- Features enhanced bifunctional detoxification support with key phytonutrients, methylated vitamin B₁₂, and calcium L-5-methyltetrahydrofolate, a bioavailable folate.*
- Provides antioxidant protection against reactive oxygen intermediates produced during the detoxification process.*

S U P P L E M E N T F A C T S

Serving Size 2 Capsules†

Servings Per Container 21 (in 42 Capsule Bottle) or 63 (in 126 Capsule Bottle)

	Amount Per Serving	% Daily Value
Vitamin A [67% (1667 IU) as as beta-carotene†† and 33% (834 IU) as retinyl palmitate]	2500 IU	50%
Vitamin C (as ascorbic acid)	133 mg	222%
Vitamin D (cholecalciferol)	33 IU	8%
Vitamin E (as d-alpha tocopheryl succinate)	67 IU	223%
Thiamin (as thiamin mononitrate)	10 mg	667%
Riboflavin	5 mg	294%
Niacin (as niacinamide and niacin)	23 mg	115%
Vitamin B ₆ (as pyridoxine HCl)	17 mg	850%
Folate (as calcium L-5-methyltetrahydrofolate†††).	268 mcg	67%
Vitamin B ₁₂ (as methylcobalamin)	33 mcg	550%
Biotin	66 mcg	22%
Pantothenic Acid (as d-calcium pantothenate)	33 mg	330%
Zinc (as zinc citrate)	6.5 mg	43%
Selenium (as selenomethionine)	50 mcg	71%
Copper (as copper citrate)	0.65 mg	33%
Manganese (as manganese citrate)	1.65 mg	85%
Molybdenum (as molybdenum aspartate)	66 mcg	88%
Silymarin (from milk thistle seed extract, <i>Silybum marianum</i>)	50 mg	*
Decaffeinated† Green Tea (<i>Camellia sinensis</i>) Leaf Extract [standardized to 60% (33.6 mg) catechins and 40% (22.4) epigallocatechingallate (EGCG)]	56 mg	*
Artichoke (<i>Cynara scolymus</i>) Leaf Extract (containing cynarin and chlorogenic acid)	167 mg	*
Watercress (<i>Nasturtium officinale</i>) Aerial Parts 4:1 Extract	133 mg	*
Ellagic Acid (from pomegranate whole fruit extract, <i>Punica granatum</i>)	33 mg	*
N-Acetyl-L-Cysteine	67 mg	*
Sodium Sulfate	100 mg	*
Taurine	117 mg	*

*Daily Value not established.

Other Ingredients: Capsule (hydroxypropylmethylcellulose), microcrystalline cellulose, magnesium stearate (vegetable), and silica.

Directions: Take two capsules once daily or as directed by your healthcare practitioner.

Form: 42 Capsules, 126 Capsules

Warning: Excess vitamin A intake may be toxic and may increase the risk of birth defects. Pregnant women and women who may become pregnant should not exceed 10,000 IU of preformed vitamin A (retinyl palmitate) per day.

Caution: If pregnant or nursing, taking other nutritional supplements, or taking medications, consult your healthcare practitioner before use.

This product is gluten free.

†Capsules are composed of plant-derived ingredients.

††Betatene® mixed carotenoids.

†††As Metafolin® US Patents 5,997,915; 6,254,904.

*Contains no more than 4% caffeine.

GLUTATHIONE SUPPORT*



GlutaClear®

GlutaClear provides a blend of key ingredients designed to support healthy glutathione levels and antioxidant systems in the body. Glutathione plays an important role in protecting the body against oxidative stress and detoxifying harmful compounds. Preliminary research suggests glutathione may also help protect mitochondria—the principle source of cellular energy—from damaging pro-oxidant influences.*

Patient benefits:

- Helps protect cells throughout the body from oxidative damage that may influence cellular aging.*
- May help improve overall redox status through influencing signaling molecules, such as tumor necrosis factor-alpha (TNF-α) and nuclear factor-kappa B (NF-κB).*
- Supports hepatic detoxification function.*

S U P P L E M E N T F A C T S

Serving Size 2 Tablets

Servings Per Container 60

	Amount Per Serving	% Daily Value
Vitamin C (as ascorbic acid)	500 mg	833%
Niacin (as niacinamide)	750 mg	3750%
Selenium (as selenomethionine)	75 mcg	107%
N-Acetyl-L-Cysteine	750 mg	*
Broccoli (<i>Brassica oleracea</i> L. var. <i>italica</i>) Seed Extract (providing 5 mg sulforaphane glucosinolate)	38.5 mg	*

*Daily Value not established.

Other Ingredients: Microcrystalline cellulose, cellulose, stearic acid (vegetable), silica, and coating (hypromellose, medium chain triglycerides, and hydroxypropylcellulose).

Directions: Take two tablets twice daily with food or as directed by your healthcare practitioner.

Form: 120 Tablets

Caution: If you are pregnant or nursing, consult your healthcare practitioner before use.

This product is gluten free.

* These statements have not been evaluated by the Food and Drug Administration. This product is not intended to diagnose, treat, cure, or prevent any disease.

HEAVY METAL METABOLISM SUPPORT*



MetalloClear®

MetalloClear is designed to help patients stay healthy by providing specialized support for heavy metal metabolism.*

Patient benefits:

- Preliminary research conducted at the FMRC[†] suggests MetalloClear may up-regulate the genetic expression of an enzyme involved in the metabolism of some heavy metals.*
- Helps to modulate oxidative stress associated with heavy metal metabolism.*

S U P P L E M E N T F A C T S

Serving Size 1 Tablet
Servings Per Container 180

	Amount Per Serving	% Daily Value
Zinc (as zinc citrate)	1.7 mg	11%
Andrographis (<i>Andrographis paniculata</i>) Aerial Part Extract	50 mg	*
Turmeric (<i>Curcuma longa</i>) Rhizome Extract [standardized to 95% (50 mg) curcuminoids]	52.5 mg	*
Proprietary Blend of Hops (<i>Humulus lupulus</i>) and Luduxin® [†]	882 mg	*

*Daily Value not established.

Other Ingredients: Microcrystalline cellulose, cellulose, stearic acid (vegetable), croscarmellose sodium, silica, and coating (hypromellose, medium chain triglycerides, and hydroxypropylcellulose).

Directions: Use as directed by your healthcare practitioner. Take with food as recommended.

Form: 180 Tablets

Warning: Do not use if pregnant, nursing, or if taking anticoagulants.

Caution: If taking medication, please consult your healthcare practitioner before use. Keep out of the reach of children.

This product is gluten free and vegetarian.

[†]Luduxin® consists of reduced iso-alpha acids (from hops extract, *Humulus lupulus*) and magnesium salt produced via a proprietary process.

[†]Functional Medicine Research Center (FMRC), the clinical research arm of Metagenics, Inc.

KIDNEY SUPPORT*



Renagen™ DTX Improved Formula

Renagen DTX is designed to protect against free radical damage from oxidative stress with a specific blend of N-acetyl-L-cysteine (NAC), targeted vitamins, and traditional Chinese herbs. Also helps support healthy vascular function, including the specialized and delicate vasculature of the kidneys.*

Patient benefits:

- Provides antioxidant protection to help maintain kidney health.*
- Features NAC, a precursor to glutathione—a crucially important antioxidant throughout the body.*
- Provides B vitamins (folate, B₆, B₁₂) that are key nutrients for cardiovascular health. Good function of the heart and blood vessels is critical to maintaining healthy kidney function.*

- Promotes healthy homocysteine metabolism with folate and vitamin B₆. Elevated homocysteine levels may negatively impact kidney health.*
- Contains methylated vitamin B₁₂ and calcium L-5-methyltetrahydro-folate (L-5-MTHF)—a body-ready, nature-identical folate.*

S U P P L E M E N T F A C T S

Serving size: 1 Capsule[†]
Servings Per Container 60

	Amount Per Serving	% Daily Value
Vitamin B ₆ (as pyridoxine HCl)	10 mg	500%
Folate (as calcium L-5-methyltetrahydrofolate ^{††})	400 mcg	100%
Vitamin B ₁₂ (as methylcobalamin)	125 mcg	2083%
Cordyceps Mycelium Extract (<i>Paecilomyces hepiali</i> Chen) [standardized to 4% (8 mg) cordycepic acid and 0.25% (0.5 mg) adenosine]	200 mg	*
Chinese Salvia Root (<i>Salvia miltiorrhiza</i>)	200 mg	*
N-Acetyl-L-Cysteine	200 mg	*

*Daily Value not established.

Other Ingredients: Capsule (hydroxypropylmethylcellulose), microcrystalline cellulose, and magnesium stearate (vegetable).

Directions: Take one capsule one to two times daily or as directed by your healthcare practitioner.

Form: 60 Capsules

Warning: Do not use if taking blood thinning medications, antihypertensive medications, hypoglycemic medications and insulin, digoxin or nitroglycerin, or before surgery.

Caution: If pregnant or nursing, or taking medication, consult your healthcare practitioner before use. Keep out of the reach of children.

This product is gluten free.

[†]Capsules are composed of plant-derived ingredients.

^{††}As Metafolin® US Patents 5,997,915; 6,254,904.

LIVER SUPPORT*



Silymarin 80™

Silymarin 80 features milk thistle seed extract providing 56 mg of silymarin by HPLC analysis. Milk thistle seed extract is noted for its antioxidant properties and support of healthy liver function.*

Patient benefits:

- Supports hepatic detoxification function.*

S U P P L E M E N T F A C T S

Serving Size 1 Tablet
Servings Per Container 90

Amount Per Serving	
Milk Thistle (<i>Silybum marianum</i>) Seed Extract providing 56 mg silymarin [†]	112 mg*
(containing silybin, isosilybin, silydianin, silychristin)	

*Daily Value not established.

Other Ingredients: Microcrystalline cellulose, stearic acid (vegetable), silica, and magnesium stearate (vegetable).

Directions: Take one tablet three times daily or as directed by your healthcare practitioner.

Form: 90 Tablets

Caution: If pregnant or nursing, or taking medication, consult your healthcare practitioner before use. Keep out of the reach of children.

This product is gluten free and vegetarian.

[†]By HPLC analysis.

METABOLIC DETOXIFICATION PROGRAM*



Clear Change® Program 10-Day Kit

The Clear Change Program is designed to enhance the body's natural metabolic detoxification process while providing adequate fuel for both cleansing and other daily activities—providing energy and support for overall well-being.*

This convenient 10-day kit includes:

- UltraClear RENEW™ (in choice of Natural Vanilla or Natural Peach) provides advanced support for liver detoxification.*
- AdvaClear®—supports balanced metabolic detoxification activity and provides antioxidant protection.*
- Free shaker cup—convenient way to mix a nutritional powder.
- Program guide—easy-to-follow instructions, menu plans, and recipes.
- Program diary—for patients to track their experience.
- Free webinar—on-demand presentation from Metagenics clinicians.
- Web-based tools, recipes, FAQs, and sign-up for daily motivational emails at ClearChangeProgram.com.

Ingredients: See individual product listings or visit www.metagenics.com.

Directions: Follow suggested guidelines as outlined in the 10-day program guide, or as directed by your healthcare practitioner.

Note: A 28-day program guide (MET1899) and online recipes (ClearChangeProgram.com) are available for more extensive metabolic detoxification protocols.

COMBINATION DETOXIFICATION SUPPORT*



Clear Change® Daily Essentials

Clear Change Daily Essentials is a premium packet containing 3 nutritional supplements designed to complement your daily foundation nutrition program and support daily detoxification following the 10- or 28-day Clear Change Program. Features AdvaClear®, GlutaClear®, and Renagen™ DTX for targeted, daily support.*

Each once-daily packet provides:

- **Bifunctional detoxification support:** AdvaClear promotes optimal vitality and health by supporting balanced activity of the Phase I and Phase II detoxification pathways. This formula provides methylated vitamin B₁₂ and folic acid along with nutrients designed to enhance the activities of several liver detoxification enzymes.*
- **Antioxidant protection & detoxification support:** GlutaClear features a blend of key ingredients designed to help boost the body's production of glutathione, a primary antioxidant throughout the entire body. Glutathione plays an important role in protecting the body against oxidative stress, protecting cellular health, and detoxifying harmful compounds.*
- **Kidney detoxification & kidney support:** Renagen DTX is a specific blend of nutrients and traditional herbs designed to promote healthy kidney detoxification and provide antioxidant protection to help maintain kidney health.*

Form: Box of 30 packets

Each packet contains: 2 AdvaClear capsules, 1 GlutaClear tablet, and 1 Renagen DTX capsule.

Ingredients: See individual product listings or visit www.metagenics.com.

Directions: Take one packet daily for one to two months or as directed by your healthcare practitioner.

Primary Considerations	10-Day Clear Change Program	28-Day Clear Change Program
Metabolic Detoxification Questionnaire Score	<50	50+
Patient Profile	<ul style="list-style-type: none"> • May benefit from occasional "Spring Cleaning" • May benefit from a follow-up to a 28-day program • Under age 50 	<ul style="list-style-type: none"> • Presents with decreased vitality • May have shown some benefit from shorter or less nutritionally rich programs, but did not meet expected outcomes • Age 50 or better
Diet & Lifestyle Considerations	<ul style="list-style-type: none"> • Eats reasonably healthy diet, exercises regularly, manages stress adequately • Takes multivitamin/mineral and/or daily metabolic detoxification support 	<ul style="list-style-type: none"> • Diet heavy in processed foods and/or lacking in beneficial phytonutrients; sedentary or high stress lifestyle • Concurrent therapeutic lifestyle program recommended
Primary Support Recommendations	• Clear Change 10-day kit to promote expected outcomes	• UltraClear RENEW
Other Possible Recommendations	• UltraClear formula of choice (with or without additional nutraceuticals)	<ul style="list-style-type: none"> • UltraClear Plus pH • UltraClear Plus • Additional nutraceutical support as appropriate
Follow-up Programs		
Immediate	• Clear Change Daily Essentials for 1-2 months	• Clear Change Daily Essentials for 1-2 months (or as recommended)
Recurring	• Routine 10-day Clear Change programs as recommended	• Routine 10-day Clear Change programs as recommended

Metabolic Detoxification

Clinical Applications At-a-Glance

Target	Formula/ Program	Advantages	Applications	Dosage
Level 1 Liver Detoxification Support*	UltraClear	Well-rounded nutritional support for the metabolism of unwanted environmental substances, such as xenobiotics.*	<ul style="list-style-type: none"> Those with known or suspected sensitivities to dietary and/or environmental substances 	Mix two scoops into eight ounces of chilled water or juice twice daily. Note: Dosage recommendations in patient guides for Clear Change Metabolic Detoxification Programs vary on certain days.
Level 2 Enhanced Liver Detoxification Support*	UltraClear Plus	Provides enhanced support for Phase II hepatic detoxification, including enhanced antioxidant protection.*	<ul style="list-style-type: none"> Decreased vitality* Those who may benefit from additional Phase II support* 	
Level 3 Enhanced Support for Liver Detoxification & Alkalinization*	UltraClear Plus pH	Provides enhanced support for Phase II, plus support for urinary alkalinization (Phase III).*	<ul style="list-style-type: none"> Decreased vitality* Ideal for those with urinary pH < 6.6* 	
Level 4 Advanced Support for Liver Detoxification & Heavy Metal Metabolism*	UltraClear RENEW	Provides enhanced support for Phases II & III, plus support for heavy metal metabolism.*	<ul style="list-style-type: none"> “Go to” formula for 10- or 28-day programs Those who may have concerns about heavy metal metabolism* 	
Glutathione Support*	GlutaClear	Provides a blend of key ingredients designed to support healthy glutathione production and antioxidant systems in the body.*	<ul style="list-style-type: none"> Liver detoxification and antioxidant support* Adjunct to UltraClear formulas 	Take two tablets twice daily with food or as directed by your healthcare practitioner.
Heavy Metal Metabolism*	MetalloClear	Promotes overall well-being by supporting heavy metal metabolism.*	<ul style="list-style-type: none"> Targeted support for the metabolism of certain heavy metals* Adjunct to UltraClear formulas 	Use as directed. Take with food.
Kidney Health & Function*	Renagen DTX	Provides antioxidant protection for kidney health and supports healthy vascular function.*	<ul style="list-style-type: none"> Daily kidney health support* Adjunct to UltraClear formulas 	Take one capsule one to two times daily.
Liver Function*	AdvaClear	Provides nutraceutical support for balanced activity of the body's liver detoxification processes.*	<ul style="list-style-type: none"> Daily liver detoxification support* Adjunct to UltraClear formulas 	Two capsules once daily or as directed.
	Silymarin 80	Provides 112 mg per serving of milk thistle extract standardized to 80% silymarin, an active compound noted for its liver support properties.*	<ul style="list-style-type: none"> Daily liver function support* Adjunct to UltraClear formulas 	One tablet three times daily.
Simplified Metabolic Detoxification Program*	Clear Change Program 10-Day Kit	10-day kit includes UltraClear RENEW, AdvaClear, shaker cup, and program guide.	<ul style="list-style-type: none"> Turnkey metabolic detoxification program* 	See program guide for daily dosage recommendations.
Multifunctional Liver & Kidney Support*	Clear Change Daily Essentials	30-day kit includes packets with AdvaClear, GlutaClear, and Renagen DTX.	<ul style="list-style-type: none"> Daily metabolic detoxification support* Ideal follow-up protocol for Clear Change or other detoxification programs* 	Take one packet daily for one to two months.

* These statements have not been evaluated by the Food and Drug Administration. This product is not intended to diagnose, treat, cure, or prevent any disease.



Metagenics
www.metagenics.com

Triple GMP Certified Manufacturing

